

Series 550 LP and 560 HP

Manual Dispense Valve

The inexpensive Series 550 LP (shown at right) and 560 HP Valves are intended for low pressure and high pressure meter mix applications, respectively. These manual valves are ideal for dispensing beads or RTM casting. The design is simple: two ball valves are threaded into the back of the manifold and are connected to a common lever so that both valves open and close at the same time.

(The 550 LP Valve is not intended for “feathering” or otherwise attempting to meter the flow.)



Specifications

■ **Material Inlet:** 1/4" FNPT

■ **Weight:**

550 Valve: 2.5 lbs (1.1 kg)

560 Valve: 1,500 psi (103 bar)

■ **Pressure Rating:**

550 Valve: 600 psi (41 bar)

560 Valve: 1,500 psi (103 bar)

■ **Wetted parts:**

550 Valve: Brass, Aluminum, and Carbon Steel

560 Valve: 303 SS

Options

■ **Low Flow**

■ **High Flow**

■ **Wide Ratio**

SERIES 550 LP Valve Assembly

Part #	Description	Style	Material
7702508 (550-100DR)	Valve w/Series 160 Outlet	Wide Ratio	Brass / Alum. / CS
7702511 (550-100HF)	Valve w/Series 160 Outlet	High Flow	Brass / Alum. / CS
7702515 (550-100LF)	Valve w/Series 160 Outlet	Low Flow	Brass / Alum. / CS
7702546 (560-100DR)	Valve w/Series 160 Outlet	Wide Ratio	Stainless Steel
7702547 (560-100HF)	Valve w/Series 160 Outlet	High Flow	Stainless Steel
7702548 (560-100LF)	Valve w/Series 160 Outlet	Low Flow	Stainless Steel
7702492 (501-131)	Solvent Flush Check Valve	–	Brass
7702494 (501-131SS)	Solvent Flush Check Valve	–	Stainless Steel



■ Series 160 Mixers: Specifications

Accessories

Element: Polyplas™

Housing: Polypropylene

Dispensing Tips

Manifold

Night Cap and Ratio Check Cap

One-Piece Jacket Pipe Adapter

Retaining Nut



Series 550 LP and 560 HP

Manual Dispense Valve

SERIES 550 LP Dispense Gun

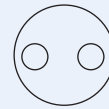
(Brass, Aluminum & Carbon Steel Wetted Parts)

Maximum Working Pressure: 600 psi (40 bars)

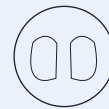
Ref. #	Qty.	Part #	Description
1	1	7702522 (551-101)	Hand Grip
2	2	7702525 (551-102)	1/4" MNPT Plug (CS)
3A	1	7702526 (551-103A)	Series 160 (A1) Manifold-LF
3B	1	7702527 (551-103B)	Series 160 (A1) Manifold-HF
3C	1	7702528 (551-103C)	Series 160 (A1) Manifold-DR
4	2	7702538 (551-113)	1/4" Swivel Connector (CS)
5	2	7702529 (551-105)	ON/Off Ball Valve (Brass)
6	1	7702539 (551-114)	One Pc. A1. Yoke Assembly*
7	1	7702533 (551-110)	Handle

Manifold Selection/ Orifice style

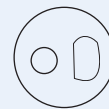
Low Flow-LF: 3A



High Flow-HF: 3B & 3E



Different ratio-DR: 3C

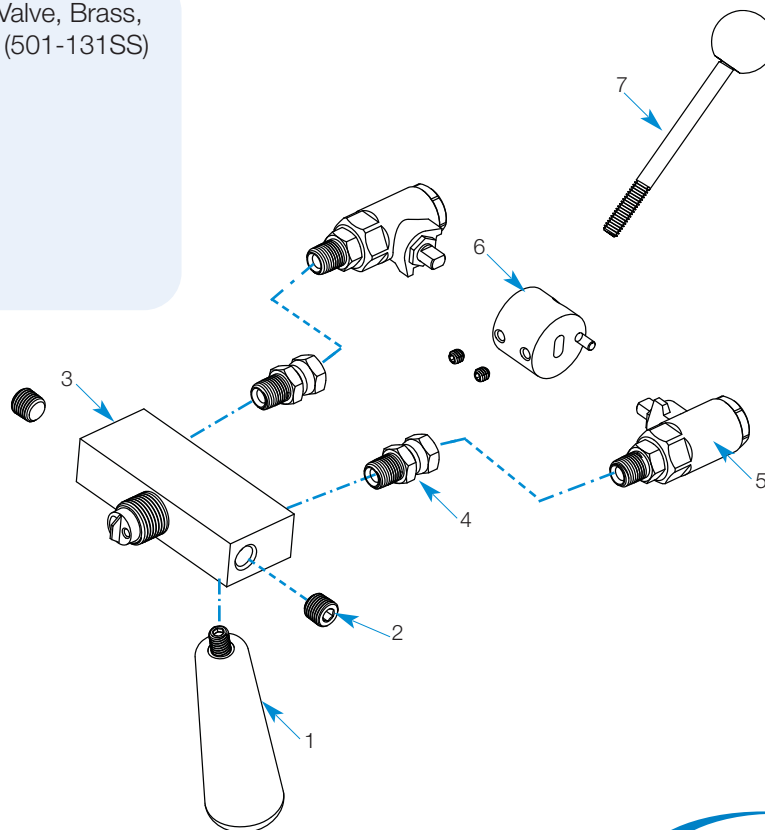


Accessory A: Solvent Flush Check: Valve, Brass,
Part # 7702492 (501-131), **7702494** (501-131SS)

Accessory C: Ratio Check cap,
Part # 7701184 (165-RC/01)

Accessory D: Night Cap,
Part # 7701181 (165-Cap/01)

* Includes Set Screws



Nordson
EFD

Series 550 LP and 560 HP

Manual Dispense Valve

SERIES 560 LP Gun (Stainless Steel)

(All Stainless Steel Wetted Parts)

Maximum Working Pressure: 1500 psi (100 bars)

Ref. #	Qty.	Part #	Description
1	1	7702522 (551-101)	Hand Grip
2	2	7702554 (561-102)	1/4" MNPT Plug (SS)
3A	1	7702555 (561-103A)	Series 160 (SS) Manifold-LF
3B	1	7702556 (561-103B)	Series 160 (SS) Manifold-HF
3C	1	7702557 (561-103C)	Series 160 (SS) Manifold-DR
3E	1	7702565 (561-203E)	1/2" MNPT (SS) Manifold-HF
4	2	7702563 (561-113)	1/4" Swivel Connector (SS)
5	2	7702559 (561-105)	ON/Off Ball Valve (SS)
6	1	7702539 (551-114)	One Pc A1 Yoke Assembly*
7	1	7702533 (551-110)	Handle

Manifold Selection/ Orifice style

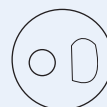
Low Flow-LF: 3A



High Flow-HF: 3B & 3E



Different ratio-DR: 3C

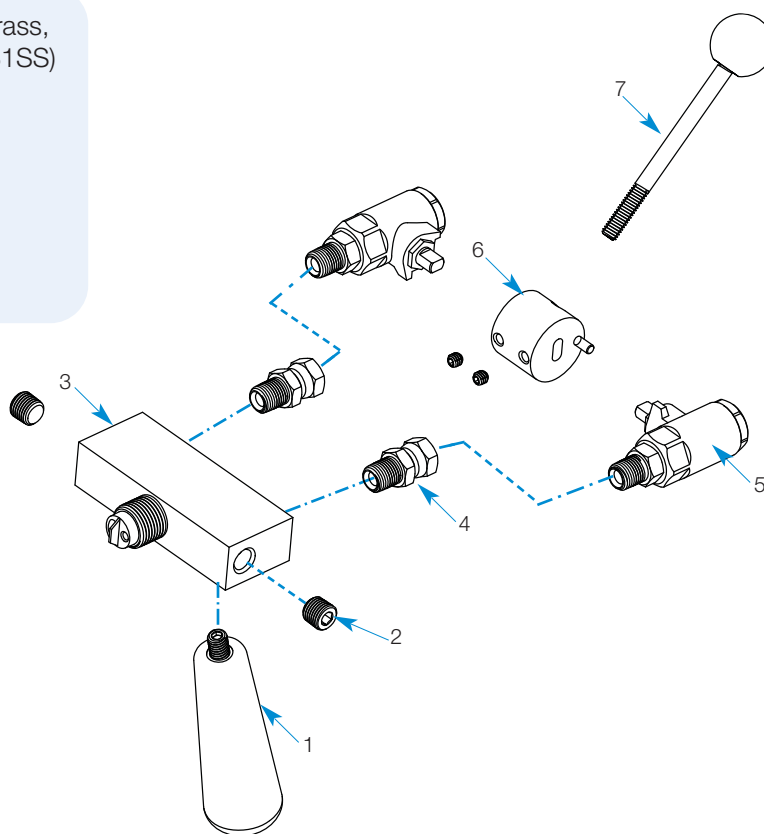


Accessory A: Solvent Flush Check: Valve, Brass,
Part # 7702492 (501-131), **7702494** (501-131SS)

Accessory C: Ratio Check cap,
Part # 7701184 (165-RC/01)

Accessory D: Night Cap,
Part # 7701181 (165-Cap/01)

* Includes Set Screws



Series 550 LP and 560 HP

Manual Dispense Valve

For Nordson EFD sales and service in over
30 countries, contact Nordson EFD or go to
www.nordsonefd.com

East Providence, RI USA
USA & Canada: 800.556.3484;
+1.401.431.7000
info@nordsonefd.com

Dunstable, Bedfordshire, UK
0800 585733;
+44 (0) 1582 666334
Ireland 00800 8272 9444
europa@nordsonefd.com

China: +86 (21) 3866 9006
china@nordsonefd.com

Singapore: +65 6796 9522
sin-mal@nordsonefd.com

The Wave Design is a trademark of Nordson Corporation.
©2010 Nordson Corporation v042710

TM

